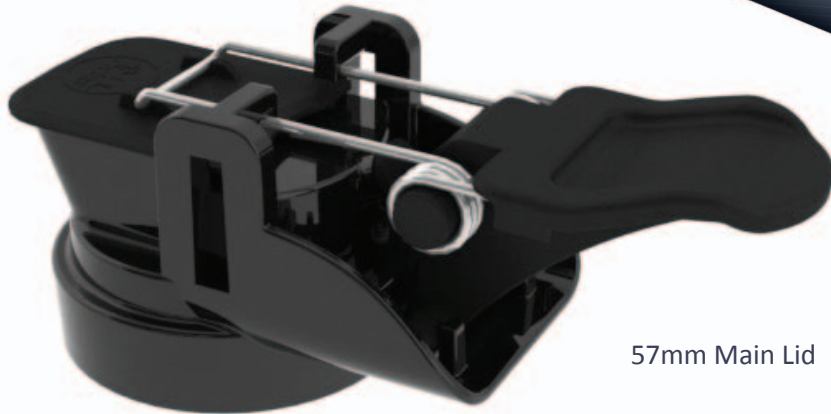




Variable Flow Spout with Adapters



57mm Main Lid

The Variable Flow Spout is designed for use on auxillary containers for clears and reducers. The main lid is versatile while utilizing various adapters to accommodate different types of containers and threads.



Main lid fits w/ 57mm fitment



32mm Adapter



42mm Adapter

Examples of Adapters



32mm Adapter available as either Rieke or Bericap fitments



42mm Rieke Pop-Up Adapter



Beta adapter Bottom half rotates independently to adjust lid

Please contact Dedoes to find the adapter that best suits your needs.